



SWET ENTERPRISE

Corporate Services & Infrastructure Solutions

It's Our Business to know your Business



F/66, India Bulls Mega Mall, Dinesh Mill Road,
Akota, VADODARA - 390 020, Gujarat, India.

Mob. : +91-7016829882, 7227006555

E-mail : info@swetenterprise.co.in

www.swetenterprise.co.in



Established in 2017 SWET Enterprise is present into the market not only to create a distinct identity for themselves but also to be a ethical service provider. Yes, you may come across normal interior designers who will take projects for house, buildings, offices and more, but we are one of the best quality interior designers who aim to solely dedicated to the corporate sector.

SWET Enterprise, an organization who is slowly developing a niche for themselves in the corporate market with their ability for providing dedicated SPOC, highly experienced architects for helping effective space optimization with floor planning and attractive designing along with technical layout followed with quality work, time bound commitment, efficient teamwork and absolute right prices.

Our motto is to provide the best infrastructure services to corporate clients by means to design their office/workspace, according to their taste in their specified time limit, budget and cumulative requirements. Our team work is in absolute sync to achieve 100%, be it anything related to Coordination or client satisfaction for a specific task.

VISION

An aim to provide end to end Infrastructure services including technical support 24 x 7, to corporate clients.

MISSION

To be the top most and easily reachable service provider in the corporate market across PAN INDIA, in spite of any climatic and geographical challenges.

GOAL

To be the market leader in generating extensive corporate client base, known for and as BEST SERVICE PROVIDER.

STRENGTH

The nature of MD with no compromise on quality is inherit to our dedicated team who is specialized in varied skills and are highly trained and motivated to ensure that no quality is compromised along with the budget, which never gets stretched while working with us.

SWET Enterprise believes in giving value for money services and that is the major reason in a span of just 8 months we have developed a big clientele which includes big names like Birla Sun life (Aditya Birla Group), IIFL, L&T, Bharti AXA, INDOSTAR (ICFL), India bulls Housing Finance Ltd., Future Generali India Ltd. (FGI), amongst other feather in HAT like sub vendors of GOG and PSU's.

With having presence & registered offices in Gujarat, Mumbai, Maharashtra & Madhya-Pradesh, our specific and dedicated team ensure to reach the equal height of satisfaction of our client.



5 Principles We Always Follow

1. Cost Effective Budgeting

Allocating the costs properly towards the quality of materials, manpower and other logistics while carrying on the project to avoid any hindrances!



2. Quality Manpower

Swet Enterprise, ensure our manpower is skilled, experienced, dedicated and honest towards the work. Look at our any team they are all highly skilled and experienced and can be challenged to give the best results without compromising on the work.

3. A Grade Materials

We believe in giving “A” grade materials in every aspect while interior designing & execution even in absence of customer so that the customer stays satisfied for a longer period of time and also chooses us the next time too.



4. Meeting Deadlines

Our motto is to deliver the specific task in specific timeline decided during inception of project, irrespective to the climatic consequences or geographical limitations.

5. Quality Check & Inspection on Regular Basis

There is a proper monitoring of work carried out on regular basis where the manpower is inline to the guidance of a supervisor or manager at required time, standing responsible against committed delivery of quantity, quality and reliable measurements, avoiding last minute confrontations.



CARPENTRY



It's nothing short of an art to convert a simple piece of wood into something usable like chairs, sofas, beds and cabins & skilled carpenters can full fill this art with perfection. Office cabins, office staff partitions (mini cabins), doors, reception desk, furniture of sofas and chairs for office use and much more. We provide complete carpentry services where all your furniture needs are taken care of.

PAINTING



Colour on the walls plays a big role but is a highly unnoticed aspect of interior designing. A right choice of colour not only appears soothing but also keeps the organization cool. For example- blue colour insists peace and harmony, Yellow brings youthfulness and energy, colours like Red and orange brings out the boldness and energy. Hence our team will give you the best options and colour combinations to make your office/ organization look completely swanky and cool just like the way you ever wanted. Along with our experienced team of painters, the clients gets to discuss about the best colour combinations & then come to a collective decision to completely change the colour of the place as per your taste.

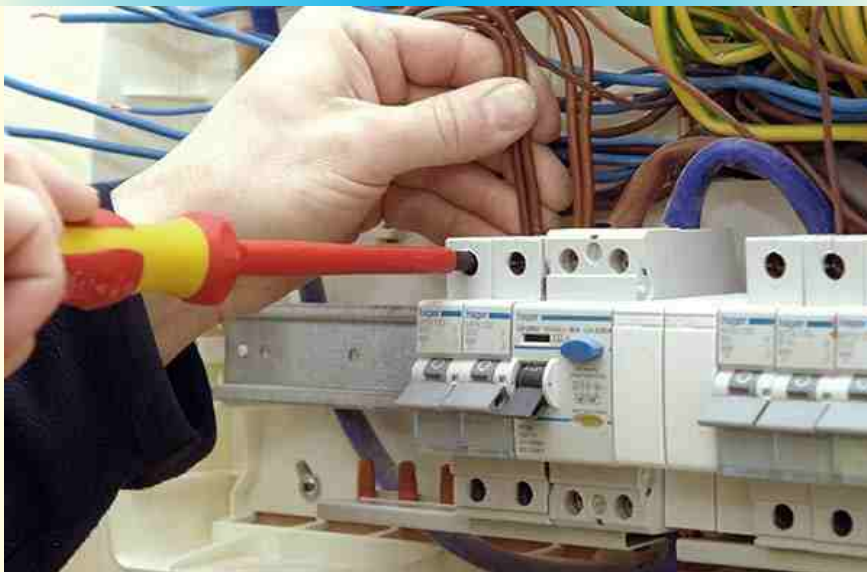


PLUMBING



Plumbing is a process that facilitates water for a vast range of services and applications. Plumbing effectively uses pipes, valves, plumbing fixtures, tanks, and other mechanisms to channel water. HVAC, bathrooms, toilets, sinks, wash-basins, waster removal from pipes, fittings of English, Indian toilets, showers, taps and much more are some of the activities which are included in plumbing. We with the help of our talented plumbers carry out the most effective plumbing services too.

ELECTRICAL FITTING



We also have engineers who will carry out complete electrical fitting work of your organization so that your office keeps on functioning with ease. Power backup, generator, fitting of switchboards, main electrical points and lines of the office space, fittings of lights, fans, AC's and other electrical fittings are included in our services.

CIVIL WORK



Starting from the foundation to ceiling we ensure to provide smooth and safe civil work service providing a ground root solution and avoid any future consequences related to civil infra.





“Our Mission is to provide the clients with the most modern interior designing without compromising the quality and their budget. Also keeping the manpower efficient and skilled while the project is on hand and leave the client speechless with pure satisfaction once the project is completed”

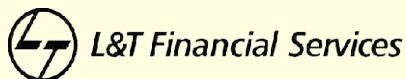
Our Mission described in 5 Phrases -

- To provide Modern, flexible and Stylish interior designing/Civil Services.
- To always have skilled and experienced manpower and labour at job
- Completing the project under client’s deadline
- Focusing on Budget control while not sacrificing Quality
- Giving the client best customer service along with 100% satisfaction.

Our Vision -

‘To keep growing and growing while expand the wings to cover the maximum cities and corporate clients and become the leader and a name to reckon with in the Corporate Interior Designing and Civil services”

OUR ESTEEMED CLIENTS



OUR BRANCHES

Ahmedabad Office :

601, 6th Floor, Harmony Icon, Nr. Baghban Party Plot, Hebatpur Road, Thaltej,
Ahmedabad - 380059. Ph. : +91-9773196728

Mumbai (Maharashtra) Office :

301, A Wing, Mansarovar, Satya Nagar, Saibaba Temple Road,
Borivalli (West), Mumbai - 400065. Ph. : +91-7977293790, 9821619090



SWET ENTERPRISE

Corporate Services & Infrastructure Solutions

Registered Office :

F/66, India Bulls Mega Mall, Dinesh Mill Road, Akota, VADODARA - 390 020, Gujarat, India.

Mob. : +91-7016829882, 7227006555, **E-mail :** info@swetenterprise.co.in

Web Site : www.swetenterprise.co.in